

a)





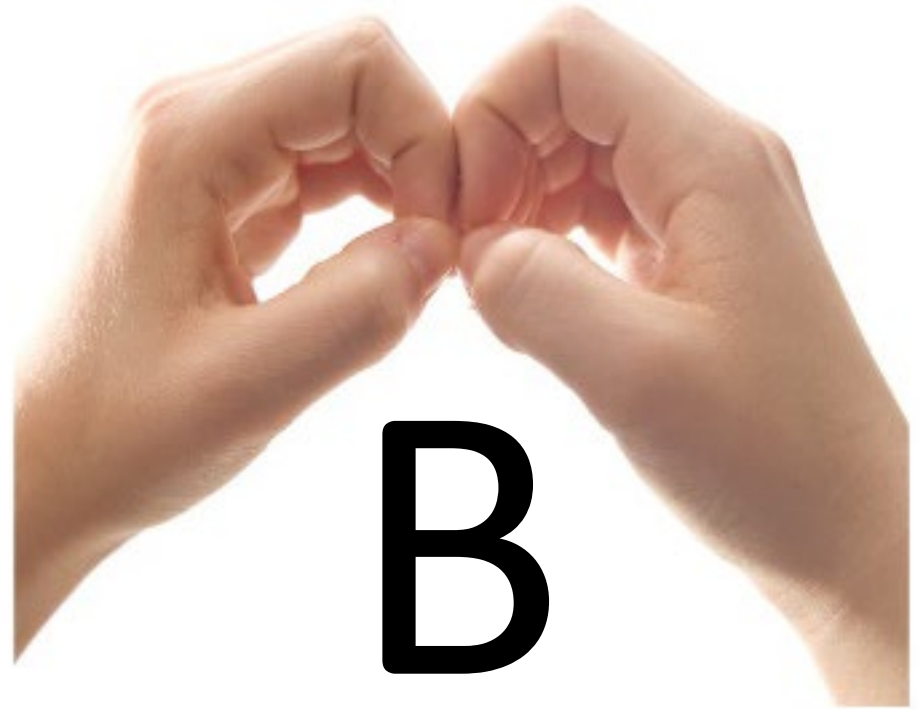
b)



c)



A



B



d)



**BUDDHISM**  
DHARMACHAKRA



**CHRISTIANITY**  
LATIN CROSS



**HINDUISM**  
AUM LETTER



**ISLAM**  
CRESCENT AND STAR



**JUDAISM**  
STAR OF DAVID



**SIKHISM**  
KHANDA



e)

8

# O

oxygen

## PERIODIC TABLE OF THE ELEMENTS

- Alkali metals
- Alkaline earth metals
- Transition metals
- Post-transition metals

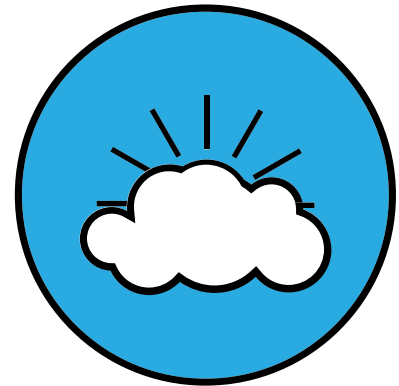
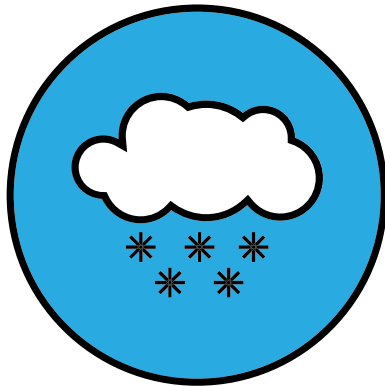
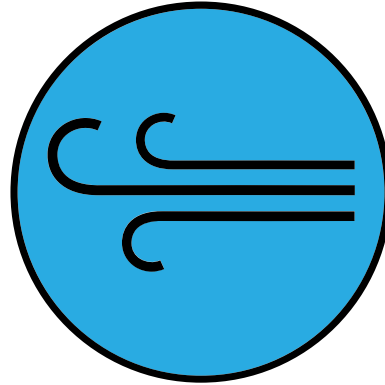
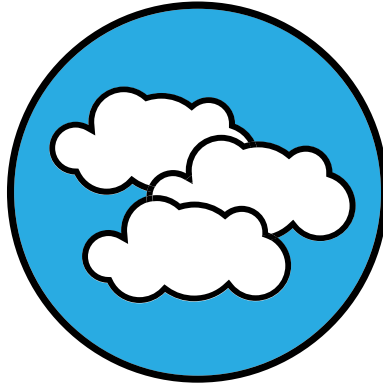
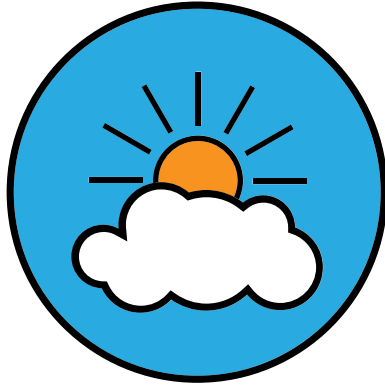
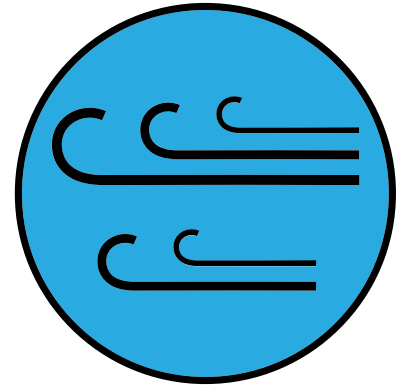
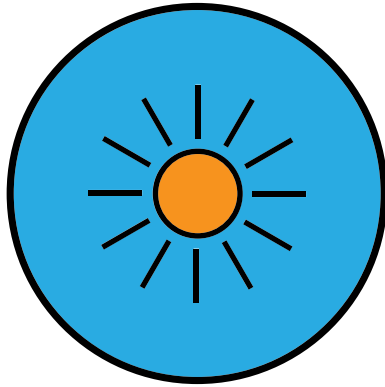
- Metalloids
- Nonmetals
- Halogens
- Noble gases

- Lanthanides
- Actinides

										5	6	7	8	9	10																
										B	C	N	O	F	Ne																
										10.811	12.011	14.007	15.999	18.998	20.180																
										13	14	15	16	17	18																
										Al	Si	P	S	Cl	Ar																
										26.982	28.086	30.974	32.065	35.453	39.948																
IA	IIA									IIIA	IVA	VA	VIA	VIIA	VIIIA																
		21	22	23	24	25	26	27	28	29	30	31	32	33	34	35	36														
		Sc	Ti	V	Cr	Mn	Fe	Co	Ni	Cu	Zn	Ga	Ge	As	Se	Br	Kr														
		44.956	47.867	50.942	51.996	54.938	55.845	58.933	58.693	63.546	65.39	69.723	72.64	74.922	78.96	79.904	83.80														
IA	IIA	IIIB	IVB	VB	VIB	VIIB	VIII			IB	IIB	IIIA	IVA	VA	VIA	VIIA	VIIIA														
		39	40	41	42	43	44	45	46	47	48	49	50	51	52	53	54														
		Rb	Sr	Y	Zr	Nb	Mo	Tc	Ru	Rh	Pd	Ag	Cd	In	Sn	Sb	Te														
		85.468	87.62	88.906	91.224	92.906	95.94	(98)	101.07	102.91	106.42	107.87	112.41	114.82	118.71	121.76	127.60														
IA	IIA	La-Lu		IIIB	IVB	VB	VIB	VIIB	VIII	IX	X	XI	XII	IIIA	IVA	VA	VIA	VIIA	VIIIA												
		55	56	57-71	72	73	74	75	76	77	78	79	80	81	82	83	84	85	86												
		Cs	Ba	La-Lu	Hf	Ta	W	Re	Os	Ir	Pt	Au	Hg	Tl	Pb	Bi	Po	At	Rn												
		132.91	137.33		178.49	180.95	183.84	186.21	190.23	192.22	195.08	196.97	200.59	204.38	207.2	208.98	(209)	(210)	(222)												
IA	IIA	Ac-Lr		IIIB	IVB	VB	VIB	VIIB	VIII	IX	X	XI	XII				IIIA	IVA	VA	VIA	VIIA	VIIIA									
		87	88	89-103	104	105	106	107	108	109	110	111	112				114														
		Fr	Ra	Ac-Lr	Rf	Db	Sg	Bh	Hs	Mt	Uun	Uuu	Uub				Uuq														
		(223)	(226)		(261)	(262)	(266)	(264)	(277)	(268)	(281)	(272)	(285)				(289)														
																	57	58	59	60	61	62	63	64	65	66	67	68	69	70	71
																	La	Ce	Pr	Nd	Pm	Sm	Eu	Gd	Tb	Dy	Ho	Er	Tm	Yb	Lu
																	138.91	140.12	140.91	144.24	(145)	150.36	151.96	157.25	158.93	162.50	164.93	167.26	168.93	173.04	174.97
																	89	90	91	92	93	94	95	96	97	98	99	100	101	102	103
																	Ac	Th	Pa	U	Np	Pu	Am	Cm	Bk	Cf	Es	Fm	Md	No	Lr
																	(227)	232.04	231.04	238.03	(237)	(244)	(243)	(247)	(247)	(251)	(252)	(257)	(258)	(259)	(262)



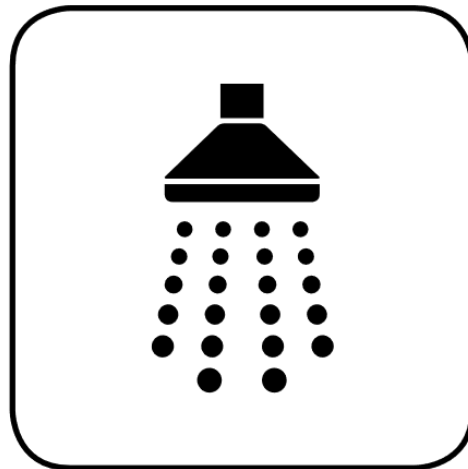
f)



g)



h)



i)

